

ABOUT US...

PRECISION

For over 50 years, Precision has been known for manufacturing quality window and door products as well as other hardware for the commercial and home consumer market.

Our innovative manufacturing process allows us to offer a wide assortment of product offerings including:

- Steel security doors
- Custom security doors
- Swinging screen doors
- Sliding screen doors
- Custom gates and fencing
- Commercial gates and fencing
- Window guards
- Protective grills
- KD kits
- Custom color options
- Vinyl screen doors

Precision has long been known for its “one-call” service, and we continue to expand our capabilities to provide the most innovative and broadest selection at a great value.

Our customer promise:

- Provide the best customer service in the industry
- Focus on quality and value
- Industry knowledge leader
- Maintain extensive product assortment
- Continue to bring innovation to the market
- Inventory on-hand and ready to ship on stock items
- Nationwide coverage

Precision is part of Prime-Line Products, the industry leader in supplying repair and replacement parts for commercial and home properties in North America. Prime-Line also distributes and offers other brands and product lines, which include:

- Window and door replacement hardware
- Screen products and accessories
- Security hardware
- Child safety
- Plumbing replacement parts
- Toilet partition hardware

Prime-Line is proud to be an ESOP – Employee Owned Company located in Redlands, California with over 400 employees.



TO OUR VALUED CUSTOMERS:

Effective date: _____

Your account#: _____

Your sales representative is: _____

Direct order desk phone: _____

Your delivery days are: _____

Hours of Operation:

8 am – 5 pm, Monday – Friday

Phone: _____

Fax: _____

Mon. Tues. Wed. Thurs. Fri.

TERMS AND CONDITIONS

PRICES & ORDERING

Prices do not include freight, taxes and duties and are subject to change without notice. Typographical errors are subject to correction. Items will be invoiced at prices current at the time of shipment. Minimum order \$25.00.

Any quotes are valid for 30 days from the time of written quotation unless otherwise stated.

All orders are accepted subject to availability of merchandise. Orders must be modified or canceled within one (1) hour of entry or fees may apply. All orders are confirmed via fax or e-mail, and are the customer's responsibility to verify. All orders will be accepted on a ship and cancel basis, unless otherwise requested.

Due to engineering upgrades and manufacturing variance, the actual replacement part may or may not look identical to the representative illustration.

Need It But, Don't See It? We welcome the opportunity to source and locate parts not shown in the catalog. Send an electronic image to Customer Service at Customerservice-pssp@precisionplp.com Or mail your sample. Sample items can be shipped freight prepaid with tracking number to Precision Screen & Security Products, Attn: Director of Customer Service, 26950 San Bernardino Avenue, Redlands, CA 92374. Please include a brief note with your name, address and phone number indicating this is a sample for identification purposes. Samples will be returned within two (2) weeks.

Special orders are non-cancelable, non-returnable and must be ordered via a purchase order from the Purchaser. All special orders will be shipped in accordance with quoted lead times. Minimum order quantities may be required on special orders or bulk orders. Bulk orders may be shipped at industry standard $\pm 10\%$ of the order quantity. Purchaser is liable for the entire order quantity. Special discounting is available on large quantity orders; call (866) 629-6636 for pricing and availability.

CUSTOM ORDERS

A signed confirmation must be received by Precision Screen & Security Products before any custom orders are scheduled for production. Precision is not responsible for any errors and/or omissions in customer verified information.

COD Custom Orders: All COD custom orders must have a 50% non-refundable deposit towards the total invoice value before production takes place.

TERMS

Precision Screen & Security Products accepts Visa, MasterCard, American Express, Discover, Diner's Card and Cash On Delivery (COD). For customers with established Precision Screen & Security Products credit, payment terms are net thirty (30) days from the date of shipment or pick-up of products. Credit application must be completed in full. All credit extended by Precision Screen & Security Products and the limits of such credit, is at Precision Screen & Security Products' sole discretion, and may be reduced or revoked by Precision Screen & Security Products at any time, for any reason. Precision Screen & Security Products reserves the right to charge customer a late payment fee at the rate of one and one-half percent (1.5%) of the amount due for each month or portion thereof that the amount due remains unpaid, or such amount as may be permitted under applicable law.

Precision Screen & Security Products has the right, at any time and in its sole discretion, to immediately change the terms of any credit extended to customer if: (i) there is a material change in customer's financial capability or creditworthiness; (ii) customer enters into or

signs an agreement regarding any Change of Control; or (iii) a trustee, receiver or examiner is appointed for customer or its affiliates or subsidiaries or customer's plan of reorganization is confirmed by a U.S. Bankruptcy Court.

Additionally, customer, and each of its subsidiaries and affiliates, agrees to provide to Precision Screen & Security Products proper authorization necessary for Precision Screen & Security Products to request any financial information from third parties.

FREIGHT

Prices stated are F.O.B. origin, freight prepaid to destination specified in the order.

Precision Screen & Security Products covers shipping and handling for standard ground delivery for orders within a 100-mile radius and over US \$225 before tax and freight (including any backorders). Please call to obtain current delivery schedules and delivery minimums for other delivery points. All shipments outside of PSSP delivery areas will be shipped via "common carrier" collect at customer's expense. "Job Site" or "Drop Shipment" deliveries are available in some areas on normal scheduled delivery days. A "Job Site" or "Drop Shipment" fee will apply. All COD job site deliveries shall be paid prior to the delivery.

Where Precision Screen & Security Products is the carrier, claims for damaged material, shortages or errors must be reported within five (5) working days after receipt of shipment. All claims reported after the five working day grace period will be subject to Precision authorization. All claims must be processed within thirty (30) calendar days.

Other terms and conditions may apply for other than standard ground delivery.

Accessorial Charges, including but not limited to over size and residential delivery charges, will be passed through from the carrier and must be paid by customer. Fuel surcharges may be applied.

Title and all risk of damage or loss pass to customer upon tender of shipment to the carrier. Our obligation to effect shipment of products will be fully discharged upon delivery to the carrier. If the product is damaged in transit, customer's only recourse is to file a claim with the carrier.

Precision will not be responsible for any failure to perform due to causes beyond its reasonable control (each, a "Force Majeure") including, but not limited to, acts of God, war, riot, embargoes, acts of civil or military authorities, denial of or delays in processing of export license applications, fire, floods, earthquakes, accidents, strikes, or fuel crises, provided that Precision gives prompt written notice thereof. The time for performance will be extended for a period equal to the duration of the Force Majeure, but in no event longer than sixty (60) days.

RETURNS

Items must be returned within 30-days from date of purchase. No returns will be accepted without pre-authorization from Precision Screen & Security Products. Contact Customer Service at (866) 629-6636 for a return authorization number. A freight and re-stocking charge (15%) may be applied. Obsolete or discontinued items may not be accepted. NON-STOCKED, CUSTOM OR SPECIAL ORDER PRODUCTS CANNOT BE RETURNED. All items that arrive with damaged packaging will be subject to a \$20.00 re-packaging fee. DAMAGED PRODUCTS ARE NOT RETURNABLE, NO EXCEPTIONS.

ACCEPTANCE

Placement of an order constitutes acceptance of these terms and conditions.

LIMITED WARRANTY

Except as provided below, Precision Screen & Security Products warrants this product solely against defects in material and workmanship for 1 year from the date of purchase and will refund the purchase price or offer product replacement only. Claimant must provide copy of purchase receipt and supply at claimant's expense product for inspection at Precision's normal place of business unless otherwise agreed. Precision expressly disclaims any, and makes no, representation about the suitability of this product for any purpose, and, except for the limited warranty expressly set forth above, or to the extent restricted or prohibited by law, makes no warranties, either express or implied, including quality, merchantability and fitness for a particular purpose. Precision agrees only to replace the product or to refund the purchase price, at its sole discretion, in the event a claim is accepted, and in no event will Precision be liable for an amount in excess of the payments received by Precision, or for any direct, indirect, incidental, special, punitive, consequential, or exemplary damages (including but not limited to lost profits, revenue, data, lost goodwill, cost of procurement of substitute equipment or property incurred by you or any third party, arising from product failure.) Any tampering, negligence or use in a manner other than intended invalidates this warranty.

- **PRODUCTS INSTALLED WITHIN 5 MILES OF ANY COASTAL REGION, OR SUBJECTED TO EXCESSIVE AND/OR CONSISTENT, MOISTURE CANNOT BE WARRANTED AGAINST RUST OR CORROSION.**
- **OPPORTUNITY TO REVIEW THE PRODUCT'S ORIGINAL CONDITION. INSPECTION OF YOUR PRODUCT UPON POSSESSION OR DELIVERY IS YOUR ONLY.**

Damage resulting from installation or transportation is not Precision's responsibility. Installation and/or transportation of this product releases Precision from any liability for surface scratches, dents, warping, jamb misalignment, frame gaps, or any other structural problems of such nature that can be caused during the installation and/or transportation, and are not the responsibility of Precision. Contact your installer or transporter directly, if applicable, for resolution. Products such as steel security doors can make noise from component rattling when closed. This is not a warranty issue. Chemicals may react to paint finishes and cause discoloration. This is not under warranty. This warranty expressly excludes the screen mesh and mesh components, which include rips, tears, separation, fraying, snags in or on screen material, or the detaching of the screen material from the spline channel. Specific warranty periods may vary based on door model and color configuration (see below); please refer to the information provided on your door model or inquire for further details.

Warranty Period Product Guide

Black, White, Bronze, Almond, Adobe, Weathered Brown 1 Year from the purchase date
Economy Doors 90 Days from the purchase date

If you have a warranty claim please notify Precision Screen and Security Doors and have the following information available:

Door Model Number: _____

Dated Proof of Purchase Receipt _____

Name of Installer (if installed by other than homeowner) _____

Detailed explanation of the defect (photos may be requested by Precision) _____

We're Serious About QUALITY



QUALITY CHECKLIST

- 1 **Custom Options:** Reference sales order / work order (248541, 484625)
- 2 **Door Specifications:**
Finished door outer dimension: Height 78 in. Width 48 3/4 in. Lock box height _____ in.
- Hinged side
Single door: Left _____ Right _____ Double door (active): Left _____ Right _____
- Door frame:
3 sided _____ 4 sided _____
- 3 **Quality:**
Scratches _____ Thin paint _____
- 4 **Style:**
Door style: Essex Door color: WHI Perf color: Charcoal F
- Inspected by: CR Date: 5-20-16

LIT595

Precision Screen & Security Products
supplies a quality inspection sticker
on every door we make.

PRECISION “SAFEGUARD” PACKAGING

We take special measures to assure your products are protected during delivery to your business and packaged to stand up to the loading and reloading that is common to our industry. We know as you prepare for delivery to your customer, that you need the product to be as protected as possible. We take pride in being unique to the industry in this regard.

❖ Hardware pack securely packaged.



❖ Completely shrink-wrapped for protection.

❖ Protected Corners



COLOR SELECTIONS

Precision Deluxe Powder Coat

Semi-Gloss Finish



Black



White



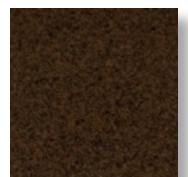
Bronze



Almond



Adobe



Weathered
Brown

Note: The colors shown are only representations of color selections. Please refer to Color Key Samples in order to guarantee exact match.

- Not all selections available in every door style. See individual door pages.

CO-OP ADVERTISING OPPORTUNITIES

Let's Work Together to Grow Our Businesses!



Door Hangers



Home Center Shows

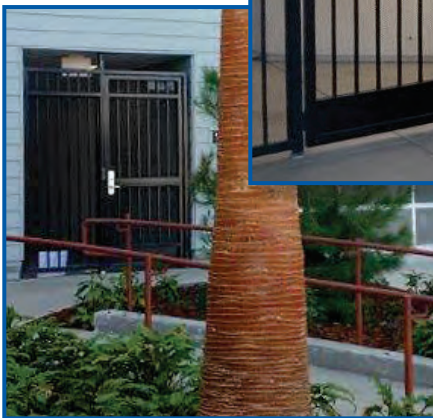
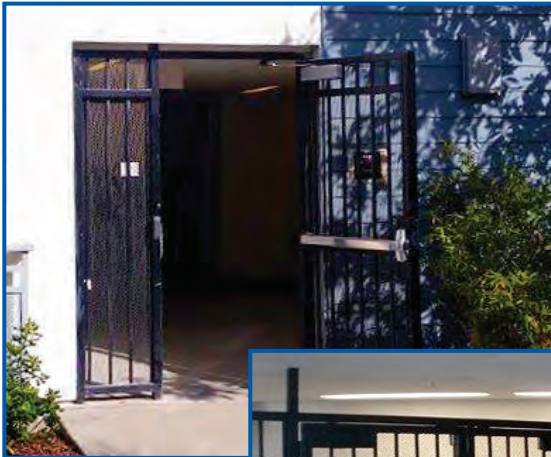
Direct Mail

Contact you sales representative today!



DID YOU — KNOW —

Precision makes custom steel products for commercial and residential use



- Security gates
- Fencing
- Garage entry barriers
- Rolling gates up to 30 ft. long
- Perimeter controlled access (to fit any opening)
- Frame sizes up to 2 in. x 6 in. available (6 in. x 6 in. posts)

Let our commercial division bid on your next project. Call our design specialist Clay Walls to discuss your project needs.



1
Swinging Screen



17 Steel Security

61 Sliding Screen



Page

i | ABOUT US

1 | SECTION 1
Swinging Screen Doors

17 | SECTION 2
Domestic Steel Security Doors

Page

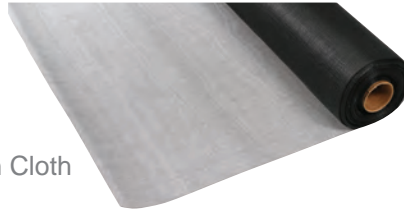
53 | SECTION 3
Economy Steel Security Doors

61 | SECTION 4
Sliding Screen Doors

73 | SECTION 5
Wood/Vinyl Screen Doors

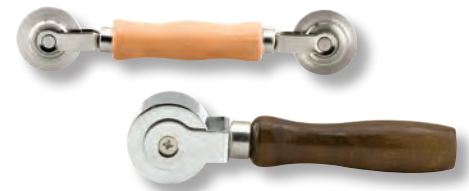


73 Wood Screen



91 Screen Cloth

113 Tools



CONTENTS

Page

- 77** | SECTION 6
Steel Storm Doors
- 83** | SECTION 7
Door Grilles & Accessories
- 87** | SECTION 8
Pet Doors & Accessories

Page

- 91** | SECTION 9
Screen Cloth, Roll Goods & Spline
- 97** | SECTION 10
Window Screen Frame & Components
- 113** | SECTION 11
Tools & Supplies

